

SweetPro®

(EQUIPRIDE®  
(EQUILIX®





**EQUIPRIDE**® is a vitamin and mineral supplement with a strong prebiotic and enzymatic digestive aid.

It has been customized to complement forages, improve appearance, enhance performance and strengthen immune function through better feed efficiency.

**EQUIPRIDE**® and **EQUILIX**® are superior “all-in-one” supplements that work effectively to help improve hooves, hair coat, joint lubricity, feed utilization, circulation and reduction of colic.

**EQUIPRIDE**® and **EQUILIX**® were designed to MAXIMIZE nutrient uptake. As they MAXIMIZE the feed’s nutrients, they *minimize* the need for a wide variety of supplements.

**EQUIPRIDE**® is the top dress available in a 5 gallon (18.9 L) pail and a 50 lb (22.7 kg) bag.

**EQUILIX**® is the free choice protein lick block available in a 50 lb (22.7 kg) and 125 lb (57 kg) block.



**EQUILIX**®

**EQUIPRIDE**®

- 4 What To Expect
- 5 How It Works
- 6 The Horse
- 7 The G.I. Tract
- 8 Probiotics
- 9 Prebiotics
- 10 Enzymes
- 12 ProBiotein®
- 14 Testimonial
- 15 Flax Factor®
- 16 Vitamins Minerals
- 18 F.A.Q.





## What to Expect from EQUIPRIDE® and EQUILIX®

### Improved Digestion

- Up to 25% less forage needed
- Helps combat digestive colicing

### Helps to Improve All of These Key Areas

- A shiny and healthy hair coat
- Strong solid hooves
- Better lubricity of joints
- Strength and endurance without getting *hot* or *high*
- Improved temperament
- *Hard-Keepers* gain weight
- Bright clear eyes
- Overall health
- And much more




## How EQUIPRIDE® and EQUILIX® Works

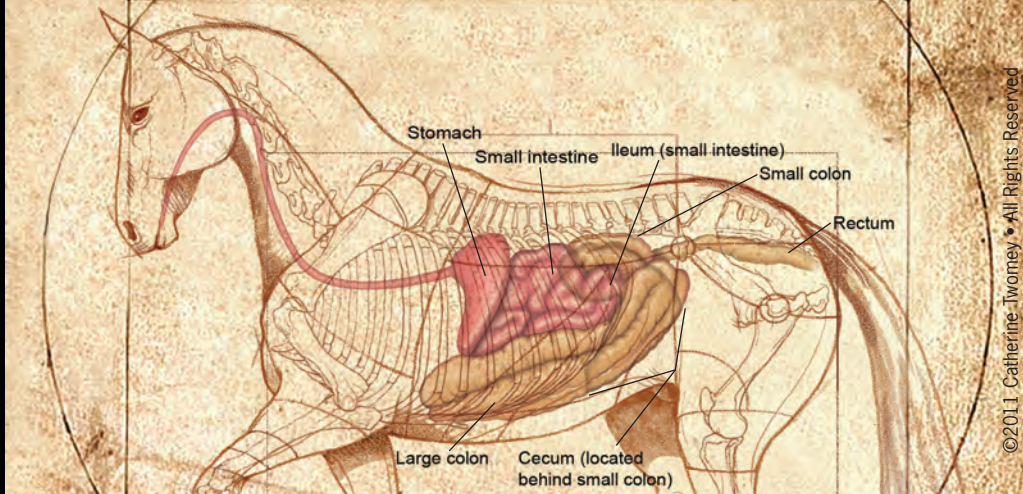
Horses produce less amylase, *the starch and sugar digestive enzyme*, than most other animals do. Therefore, the chances are greater for undigested starch from grains and sugar from molasses reaching the hindgut.

### **This Is Where Trouble Starts**

Elevated levels of starch and sugar reaching the cecum, force a shift in the microbial population, lowering pH, and often allowing pathogenic microbes to gain a foothold. Also, with greater acidity comes cell wall damage which can lead to digestive colic.

**EQUIPRIDE'S** unique buffered blend of enzymes and prebiotics help limit the chances of this happening. The ingredients have been externally processed (fermented) so they come pre-digested for the horse, thus improving nutrient utilization of the horse's *entire* ration. This improved feed efficiency, means less forage is used to get the same job done and little or no grain is needed except in the most strenuous of work loads.

Forage requirements drop an average of 25%. Imagine saving  of your hay bill.



**The Digestive Tract is classified into two parts:**

**Foregut** (front - Stomach and Small Intestine) is designed for prepping and digesting small and steady supply of forages.

**Hindgut** (back - Cecum and Large and Small Colon) is designed for completing digestion of the fibrous materials.

## The Horse

Designed for foraging on small amounts of roughage throughout the day, the horse is a *flight animal*, and can run at a moment's notice without being bogged down by big feed loads.

Unfortunately, most horse owners do not have the luxury of letting their horses out to graze on endless pastures. For the most part, horses are often fed large amounts of concentrate once or twice a day. This can greatly undermine a horse's digestive process.

If there is not enough forage going through the serpentine small intestine, it can cause kinks and colic tie-ups. If too much *unassimilated starch / sugar* enters the cecum (where the majority of the microbial digestion takes place), you get a population bloom of sugar-eating microbes. The microbes that are designed to eat the high-fiber forage, suffer. This creates imbalance, excess acid forms and begins to do damage, creating a toxic environment.

# Horse Digestion

The yeast in ProBiotin<sup>®</sup>, cultured on a media of wheat, oats, barley malt and flax, is rich in biotin and other nutrients to aid digestion. Oligosaccharides – often called “prebiotics” because they feed the beneficial probiotic bacteria – are a key part of the ProBiotin<sup>®</sup> additive.

These prebiotics help maintain good digestive tract health. At the same time, the enzymes in EQUIPRIDE<sup>®</sup> and EQUILIX<sup>®</sup> – amyolytic, fibrolytic, proteolytic and phospholytic – offer support for your horse’s utilization of fiber, starch, protein, phytic acid and minerals.



**EQUIPRIDE<sup>®</sup>** loose meal is a top dressing that blends dried distillers grains, stabilized milled flax, vitamins, macro minerals, organically complexed trace minerals and ProBiotin<sup>®</sup>. Our proprietary blend additive ProBiotin<sup>®</sup>, offers yeast culture, prebiotic oligosaccharides, enzymes and protein isolates.



EquiPride<sup>®</sup> also includes ethyl alcohol that improves palatability, enhances fiber digestion and adds another non-starch energy source. Now with a feed energy boost, the cost of maintaining your horse in top condition can be reduced.

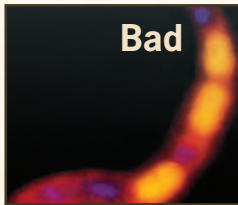


**EQUILIX<sup>®</sup>** is a free-choice protein lick block. SweetPro<sup>®</sup> pioneered making solid blocks of fermentation feeds from dried distillers grains (DDG). EquiLix<sup>®</sup> is formulated especially for horses, using dried distillers grains, stabilized milled flax, vitamins, macro minerals, organically complexed trace minerals and ProBiotin<sup>®</sup>. The yeast and enzyme levels in ProBiotin<sup>®</sup> greatly enhance the digestion of forages, so horses get more out of their hay and pasture.

The trace minerals are organically complexed to help improve their bioavailability. And the FlaxFactor<sup>®</sup> of added milled flax provides high levels of healthy Omega 3 fatty acids, which are often missing in horses’ modern diets. Flax has dense energy, plus high levels of lignans, which help improve your horse’s immune function.



When probiotics are strong and healthy, they breakdown foods and their population flourishes – leaving very little room and food for the pathogens.



## Probiotics

- Probiotics commonly refers to both the beneficial bacteria in the digestive tract and the supplements used to increase their population.
- They break down forages by converting sugars and carbohydrates into beneficial by-products of fatty acids and nitrilites where they will then be absorbed into the blood and delivered to cells as nutrients.
- Certain probiotics are better for eating certain foods – this is referred to as selective digestion.
- Microflora is the broad term that describes all the bacteria – both good and bad – active in the digestive tract.
- Probiotics and pathogens (disease-causing microorganisms) are all a part of the same microflora, but when the probiotics are healthy, their populations flourish – leaving little room and food for the pathogens.
- This “crowding out” of the pathogens is referred to as competitive exclusion.
- *Prebiotics* help keep probiotics healthy.



## Prebiotics

- Prebiotics are feed for the probiotics.
- Prebiotics are dietary food fibers that nourish the microflora's beneficial bacteria as they are then converted into beneficial nutrients.
- Prebiotics are **oligosaccharides** which are short-chain sugars.
- Oligosaccharides can not be directly digested by the horse. They can only be digested by the probiotics.
- The oligosaccharides that are used in **EQUIPRIDE**<sup>®</sup> and **EQUILIX**<sup>®</sup> are **fructo, mannan, xylo and arabinoxylo**. These four oligosaccharides have been specifically selected, because separately they are good, but combined they are better.
- Many products contain only one type of prebiotic, but since selective digestion occurs, **EQUIPRIDE**<sup>®</sup> and **EQUILIX**<sup>®</sup> targets four main types of prebiotics.
- This becomes a key advantage for users of **EQUIPRIDE**<sup>®</sup> and **EQUILIX**<sup>®</sup>, because when probiotics are healthy and strong, feed gets digested better, nutrients are absorbed better, and the pH stays balanced.





## Enzymes Make Life Work

- Enzymes are digestive catalysts that spur on all the reactions occurring in the body – from the breaking down of vitamins and minerals during digestion to the actual growing and the building of cells.
- Enzymes are truly fascinating. Wherever there is life, there are enzymes. They are the catalysts that speed up all reactions involving the transformation of energy.
- There are many types of enzymes and all are specialized for specific chemical reactions.

## Enzymes Work Like This

Everything that is coming into the horse's body has a certain chemical shape. These shapes can't be absorbed into the blood or consumed by the cells.

Enzymes attach to these shapes, rearrange them into something more bioavailable, and then send them on their way.

Enzymes can perform multiple jobs. For instance, fibrolytic enzymes are targeted to break down *fiber*.

Barley malt contains a tremendous amount of enzymes.

When you germinate (malt) the barley seed, it sends out these enzymes that would normally utilize the seed's storage pod to convert starches and proteins into a plant stem.

By halting this germination process, the abundance of liberated enzymes are harnessed for use in **EQUIPRIDE®** and **EQUILIX®**.

As an example, phytase is not added separately to **EQUIPRIDE®** and **EQUILIX®**, but since it occurs naturally in the barley malt, it is still very prominent in the product. Phytase is crucial in utilizing phosphorus.

The prebiotics and enzymes are found in the blend additive, ProBiotin®.



▼  
**Amylolytic Enzymes**  
breakdown  
starch and sugars

▼  
**Fibrolytic Enzymes**  
breakdown  
fibers

▼  
**Phospholytic Enzymes**  
breakdown  
phosphorus and phytic acid

▼  
**Proteolytic Enzymes**  
breakdown  
proteins



## ProBiotein® - 4 Prebiotics, 4 Digestive Enzymes

### For Better Horse Health

ProBiotein® is a blend of strategically fermented ingredients, designed to aid your horse's digestion and promote better health.

It's made from all natural Wheat, Oats, Flax and Barley. ProBiotein® is included in **EQUIPRIDE®** and **EQUILIX®**.

ProBiotein's blend has 4 prebiotic fibers, 4 digestive enzymes, multiple amino acids, lignans and Omega 3.

In the patent pending ProBiotein® process, starch is removed, protein and dietary fiber are concentrated, and **four prebiotic oligosaccharides** are delivered: **FOS** (Fructo), **MOS** (Mannan), **XOS** (Xylo) and **AXOS** (Arabinoxyl) **oligosaccharides**, plus Beta Glucan.

These important, small grain prebiotic fibers help feed the beneficial probiotic bacteria in your horse's digestive system, to keep digestion and the equine immune system performing optimally.

ProBiotein® also has natural **Amylolytic**, **Fibrololytic**, **Phospholytic** and **Proteolytic digestive enzymes**. Once reanimated inside the G.I. tract, ProBiotein's enzymes and yeast cultures aid in the digestion of the starches, fibers, minerals and proteins in forage and feed.

The **Flax** in ProBiotein® gives your horse healthy **Omega 3**, plus **lignans** for antioxidant properties and improved immune function.

ProBiotein® in **EQUIPRIDE®** and **EQUILIX®** dramatically improves nutrient utilization, giving your horse what it needs for growth and health.

Nothing else comes close to **EQUIPRIDE®** and **EQUILIX®**.



Oats



Flax



Wheat



Barley

## ProBiotin® is a blend additive

ProBiotin® includes protein isolates from four different sources: Oats, Wheat, Barley and Flax.

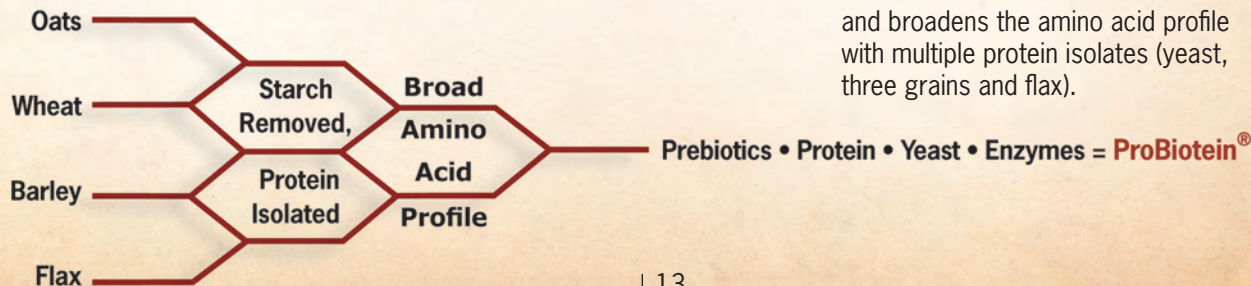
This provides a **broad amino acid profile**, highlighted by the hoof-helping amino acids methionine and cysteine.

**EQUIPRIDE®** has a “wine” or “beer-like” aroma because ethyl alcohol is produced when yeasts are grown. The alcohol provides a dense energy source along with a fiber digesting benefit. Most importantly, by being undistilled the enzymes used to prepare the media for yeast growth remain uncooked, thus they continue working as a viable digestive catalyst in the horse.

### So what does this mean for your horse?

A greater bioavailability of your horse’s feed, so you’ll be using less forage to deliver the same amount of nutrients.

And with greater bioavailability, the nutritional value of the food when it reaches the cells of your horse will be improved.



ProBiotin® is a unique and proprietary blend of nutritional supplements designed to maximize feed utilization and minimize health problems.

### ProBiotin's blend additive consists of:

**A. Prebiotic oligosaccharides to feed the beneficial probiotic bacteria**

**B. A digestive enzyme array**

Amylolytic – for starch and sugar

Fibrololytic – for fiber

Phospholytic – for phosphorus

Proteolytic – for protein

**C. Yeast cultured on a media of wheat, oats, barley malt and flax**

The ProBiotin® blend is stabilized in a manner which optimizes enzymatic values and fermentation metabolites and broadens the amino acid profile with multiple protein isolates (yeast, three grains and flax).



## EQUIPRIDE® and EQUILIX® Guaranteed Analysis

### GUARANTEED ANALYSIS

NUTRIENT		MEAL	BLOCK
		EQUIPRIDE®	EQUILIX®
<b>CRUDE PROTEIN</b>	MIN	14.00%	12.00%
<b>OMEGA-3 FATTY ACID</b>	MIN	0.55%	0.40%
<b>CRUDE FAT</b>	MIN	5.50%	6.00%
<b>CRUDE FIBER</b>	MAX	5.50%	5.50%
<b>ADF FIBER</b>	MAX	8.50%	8.50%
<b>CALCIUM (Ca)</b>	MIN	1.00%	2.00%
<b>CALCIUM (Ca)</b>	MAX	1.50%	2.50%
<b>PHOSPHORUS (P)</b>	MIN	1.25%	1.50%
<b>SALT (NaCl)</b>	MIN	7.50%	10.50%
<b>SALT (NaCl)</b>	MAX	9.00%	12.50%
<b>MAGNESIUM (Mg)</b>	MIN	1.50%	2.00%
<b>POTASSIUM (K)</b>	MIN	1.10%	1.10%
<b>SULFUR (S)</b>	MIN	0.25%	0.50%
<b>FLUORINE (F)</b>	MAX/PPM	0.8	0.8
<b>SELENIUM (Se)</b>	MIN/PPM	5	5
<b>COBALT (Co)</b>	MIN/PPM	4	4
<b>COPPER (Cu)</b>	MIN/PPM	500	500
<b>ZINC (Zn)</b>	MIN/PPM	1,000	1,000
<b>MANGANESE (Mn)</b>	MIN/PPM	750	750
<b>IRON (Fe)</b>	MIN/PPM	350	350
<b>IODINE (I)</b>	MIN/PPM	8	8
<b>D-BIOTIN</b>	MIN/PPM	18	18
<b>VITAMIN A</b>	IU/LB	100,000	100,000
<b>VITAMIN D</b>	IU/LB	20,000	20,000
<b>VITAMIN E</b>	IU/LB	350	350

### Ingredients:

ProBiotin® (yeast culture on a fermented media of wheat, oats, barley malt and flax), Distillers Dried Grains with Solubles, Salt, Ground Flax, Calcium Sulfate, Monocalcium Phosphate, Magnesium Oxide, Potassium Chloride, Copper Proteinates, Zinc Proteinates, Manganese Proteinates, Zinc Sulfate, Copper Sulfate, Manganese Sulfate, Cobalt Carbonate, Sodium Selenite, Ethylenediamine Dihydriodide, Aspergillus Oryzae Fermentation Product Dehydrated, Aspergillus Niger Fermentation Product Liquid, Vitamin A Acetate, Vitamin D3, Vitamin E Supplement, d-Biotin.  
**EquiLix® also has** – Pea Meal, Diatomaceous Earth, Vegetable Oil.

### EquiPride® Digestive Enzyme Activity (at time of manufacture):

**Alpha Amylase** (from barley malt, Aspergillus oryzae) 34,180 ug (968 mcg) starch hydrolyzed min/oz (min/kg).  
**Amyloglucosidase** (from Aspergillus niger, Aspergillus oryzae) 4,540 ug (128 mcg) maltose hydrolyzed min/oz (min/kg).

### EquiLix® Digestive Enzyme Activity (at time of manufacture):

**Alpha Amylase** (from barley malt, Aspergillus oryzae) 10,180 ug (288 mcg) starch hydrolyzed min/oz (min/kg).  
**Amyloglucosidase** (from Aspergillus niger, Aspergillus oryzae) 1,540 ug (43 mcg) maltose hydrolyzed min/oz (min/kg).

# EQUIPRIDE<sup>®</sup>

## Helps Digestion

- Up to 25% less forage needed
- Helps combat digestive colicing
- Helps hard-keepers gain weight
- Digestive pH less acidic
- Better nutrient uptake
- Distillers grains and solubles
- Complex carbohydrate energy
- Not simple sugars like molasses
- Balanced minerals and vitamins
- Organic complexed trace minerals

## Helps Health

- Shiny, healthy mane, hair coat
- Strong, solid hooves
- Better lubricity of joints
- Bright, clear eyes
- Promotes blood flow to the lamina
- Helps brain, muscle, skeletal function
- Better circulatory, respiratory
- Stronger immune system

## Helps Performance

- Improved calmness, temperament
- Better energy, strength, endurance
- Better fertility
- Less getting hot or high
- Helps speed training recovery



### How much EQUIPRIDE<sup>®</sup> do I feed my horse?

For maintenance, we recommend you feed at the rate of 1 oz (30 g) per one hundred pounds (50 kg) of body weight per day.

This equals 10 oz (300 g) a day for a 1,000 lb (500 kg) horse.



That's two of the included 5 ounce (141 g) blue scoops per day.

## Vitamins

## Minerals

<b>A</b>	Vision Skin condition Coat condition Reproduction Tissue lining	<b>Calcium</b>	Bones and teeth, regulating enzyme and cellular activity, muscle contraction
		<b>Phosphorus</b>	Bones and teeth strengthening
		<b>Salt</b>	Electrolyte – helps water absorption, nerve function, stress relief, respiratory health
<b>D</b>	Healthy skin Controls absorption, deposition, and reabsorption of calcium and phosphorus	<b>Magnesium</b>	Nerve / muscle function, controls nervousness, excitability and muscle tremors; calming influence
		<b>Potassium</b>	Electrolyte – helps water absorption, nerve-muscle contraction, eases muscle fatigue and tying-up
		<b>Sulfur</b>	Essential bonding element in hooves, skin and hair, cartilage, tendon, ligaments
<b>E</b>	Antioxidant Healthy skin Muscular activity Muscle tone Endocrine system (hormones)	<b>Copper</b>	Tendon / cartilage development, transform cartilage to bone, skin pigment, fertility, strong immune system
		<b>Selenium</b>	Muscle and immune function, powerful antioxidant
		<b>Zinc</b>	Hoof development, synthesis of DNA, RNA and protein, cellular growth and repair
		<b>Iron</b>	Essential part of oxygen carrying in the blood and muscles involved in respiration
<b>Biotin</b>	Healthy skin Shiny coat Hoof growth	<b>Manganese</b>	Bone and joint cartilage formation
		<b>Iodine</b>	Iodine deficiency or excess may cause goiters
		<b>Cobalt</b>	Calming influence, metabolizes proteins, fats and carbs





EquiLix® 50 lb (22.7 kg)

**EQUILIX**® holds up in the rain.

Unlike molasses blocks that can dissolve in the rain and melt in summer heat, EquiLix® blocks will shed rain and remain firm and available in rain, summer heat, freezing cold and all weather conditions.



EquiLix® 125 lb (57 kg)



## FAQs

### **Q. How can **EQUIPRIDE** perform so well for such a reasonable price?**

A. This is a question in many people's minds. Our company, and the origins of **EQUIPRIDE** and **EQUILIX** are rooted in production agriculture where improving animal health, advanced nutritional research and strictly controlled costs are a main focus. If you take advantage of this you can actually save money with **EQUIPRIDE** and **EQUILIX**. Simply put, using this ONE product can eliminate the use of many other isolated supplements. Additionally, you can cut your forage needs by 20% or 25% when using **EQUIPRIDE** and **EQUILIX**.

### **Q. How is a 20% to 25% forage feed reduction possible?**

A. Through improved feed efficiency. This happens when the horse's G.I. tract and the gut micro flora (digestive microbial populations) are kept in an optimum condition – improved feed efficiency equates to improved nutrient utilization.

### **Q. What is the strong odor when I open a pail of **EQUIPRIDE**?**

A. This "wine-like" odor is from alcohol remaining in the product. If we were to remove it, we would lose product effectiveness in two ways:

1. Alcohol is a dense energy.
2. Distilling the alcohol out of **EQUIPRIDE** would require very high temperatures that would stop **EQUIPRIDE** enzymatic activity by cooking the enzymes.

### **Q. How can digestive enzymes do any good? Won't they be destroyed by the stomach acids?**

A. No. They simply pass through. High temperature is a bigger danger to enzymes.

**Q. My horse is VERY picky. What can I do if the horse doesn't take EQUIPRIDE® right away?**

A. Every horse is different. Most will eat EQUIPRIDE® out of your hand on the first try and some take a little coaxing. Try to mix a pinch in with their feed and slowly increase this over a two week period. Other methods include mixing it with wetted beet pulp or applesauce.

**Q. My horse has Cushings, thyroid problems, is insulin resistant and has often foundered. Are EQUIPRIDE® and EQUILIX® safe to use with medications?**

A. Yes. EQUIPRIDE® and EQUILIX® are nutritional supplements so they can be used with whatever medication program your horse is on. EQUIPRIDE® and EQUILIX® allow the horse's body to absorb nutrients more effectively, which also helps medications work more effectively. (Horses with these conditions should be fed at 1.5 oz (42 g) per hundred pounds (45 kg) of body weight instead of the recommended maintenance level of 1 oz (28 g) per hundred weight (45 kg).



**Q. On the guaranteed analysis, it lists 34,180 ug starch hydrolyzed/min/oz (1,205 ug min/g). What does this mean? I have a Cushings horse and it shouldn't have sugar/starch.**

A. This refers to the activity/strength of the starch digesting enzyme in EQUIPRIDE® and EQUILIX®. The higher the number, the more effective the enzyme.

**Q. Are EQUIPRIDE® and EQUILIX® safe for pregnant mares?**

A. Yes. Your pregnant mares will thoroughly digest their forage and rations. This will help keep their body weight up both during gestation and during nursing.

**Q. How much EQUIPRIDE® and EQUILIX® should I feed my horse?**

A. Your horse will instinctively meter the amount of EQUILIX® block it consumes to get the minerals, vitamins and protein it needs. For EQUIPRIDE®, feed at the rate of 1 ounce per one hundred pounds of body weight a day. So a 1,000 lb (500 kg) horse should get 10 ounces (300 g) of EQUIPRIDE® a day. That's two of the 5 ounce (141 g) blue scoops per day.

5 ounce  
(141 g)  
Scoop



**SweetPro®**  
PREMIUM FEED SUPPLEMENTS

**EQUIPRIDE®**  
**EQUILIX®**

**Harvest Fuel**  
**SweetPro Feeds**  
P.O. Box 69  
Walhalla, ND 58282



Use 25% Less Hay



Your EquiPride® and EquiLix® dealer is:

**Phone:**  
218-568-8887  
**Toll Free:**  
888-229-0475

**Web:**  
[www.sweetpro.com](http://www.sweetpro.com)  
**E-mail:**  
[info@sweetpro.com](mailto:info@sweetpro.com)

